

PORTFOLIO

Adeline-Julie Bee

BEST SELECTED WORK 2024



info@adelinejuliebee.com
www.adelinejuliebee.com
@adelinejuliebee



CONTACT

info@adelinejuliebee.com
www.adelinejuliebee.com
[@adelinejuliebev](https://www.instagram.com/adelinejuliebev)



ABOUT ME

Adeline-Julie Bee

Hello, I'm an artist, pattern designer, and nature enthusiast specializing in watercolor. Inspired by the Belgian Country side, I craft homemade inks and colors, channeling nature's beauty into my art. I translate my watercolours into captivating surface designs, creating patterns infused with poetry.



info@adelinejuliebee.com
www.adelinejuliebee.com
@adelinejuliebee



ABOUT ME

My Process

I create my own inks and watercolors, drawing inspiration from nature's palette. I extract color from berries, leaves, fruits, and vegetables. These unique swatches are more than just colors; they form the foundation of a thoughtful process and a genuine passion for natural hues. I often draw inspiration from the various shades I create to incorporate them into my pattern collections. Each color carries a magical touch, and I love bringing that dimension into my work.



info@adelinejuliebee.com
www.adelinejuliebee.com
@adelinejuliebee

Flowering Fields



MEADOWS



FIELD STEMS



MEADOWS IN THE NIGHT



CINNAMON



SOME DREAMS



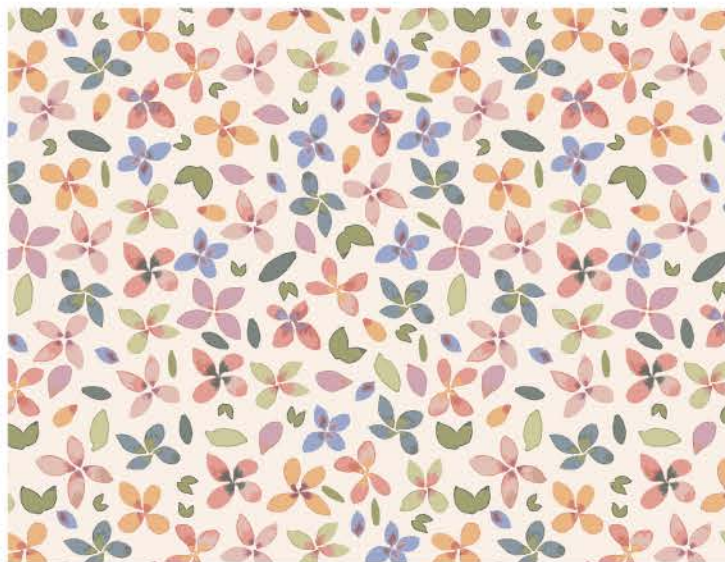
CHAMOMILLA



SAFFRON



SAFFRON BLOSSOMS



SUNRISE PETALS

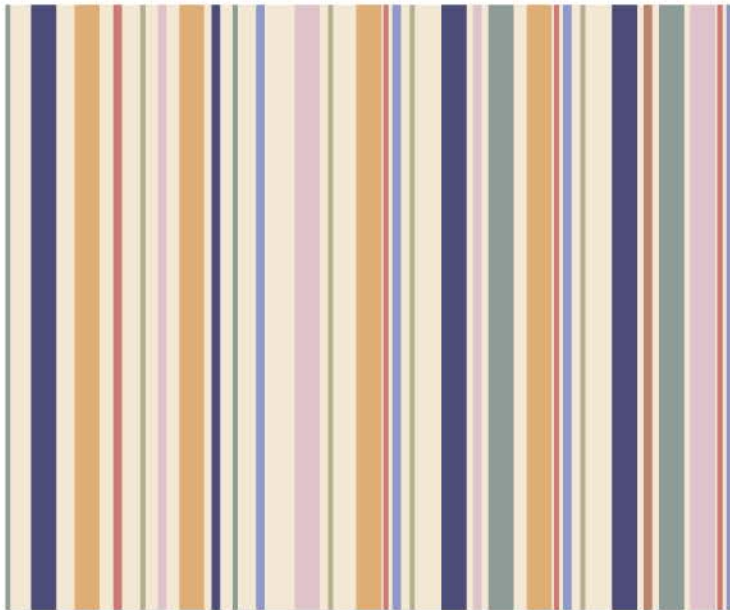


PRIVET TREASURES

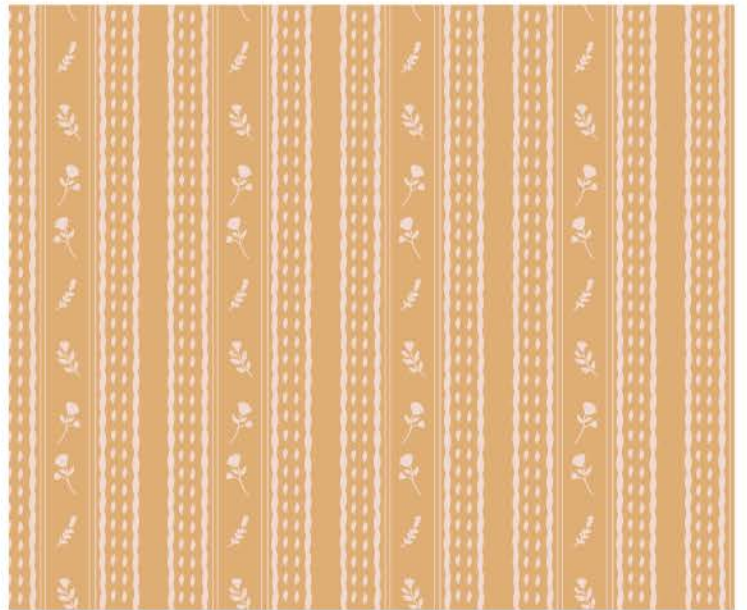
Rustic Check



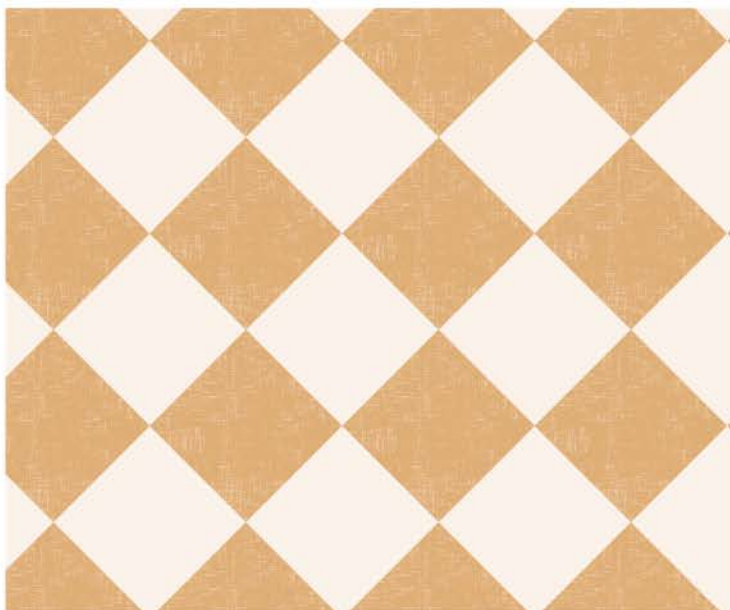
CHECKED BLOOMS



HARVEST PLAID



TINY TRELLISES



LINEN WEAVE



PETITE POSIES

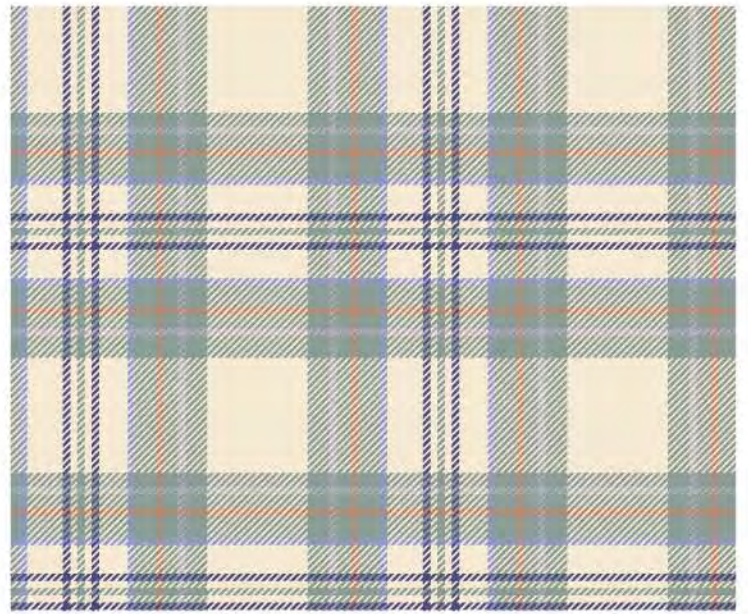
Cottage Weave



FLEURS CASCADE



FLORAL GARLAND



SCOTTISH FIELD



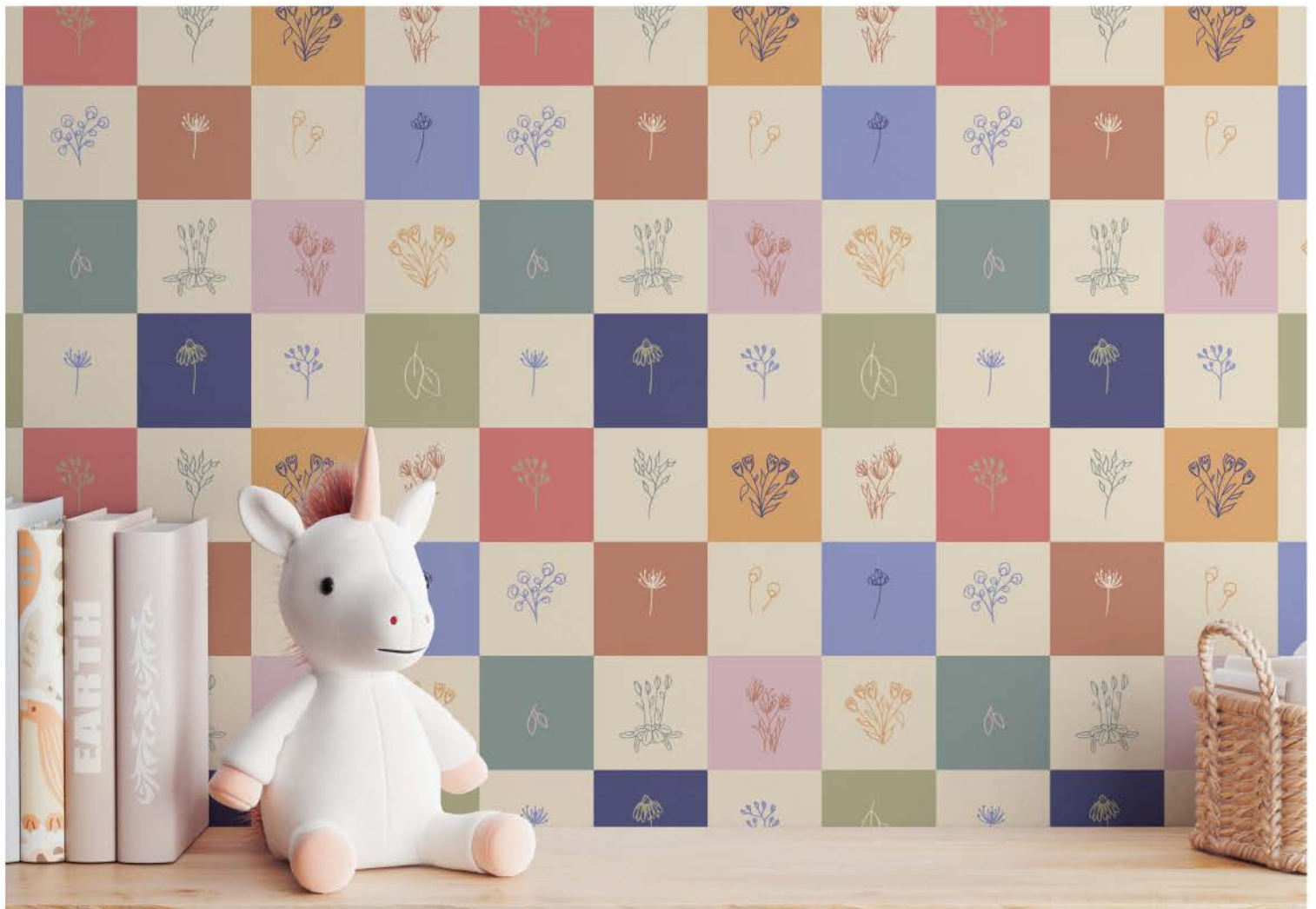
BUDDING HARMONY



VALLEY WAVY



PETITES FLEURS



CHECKED BLOOMS



COTTAGE WEAVE COLLECTION



SUPER STITCH



WEIRD DIAMOND



FIELD STEMS